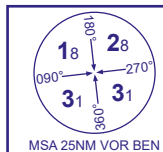
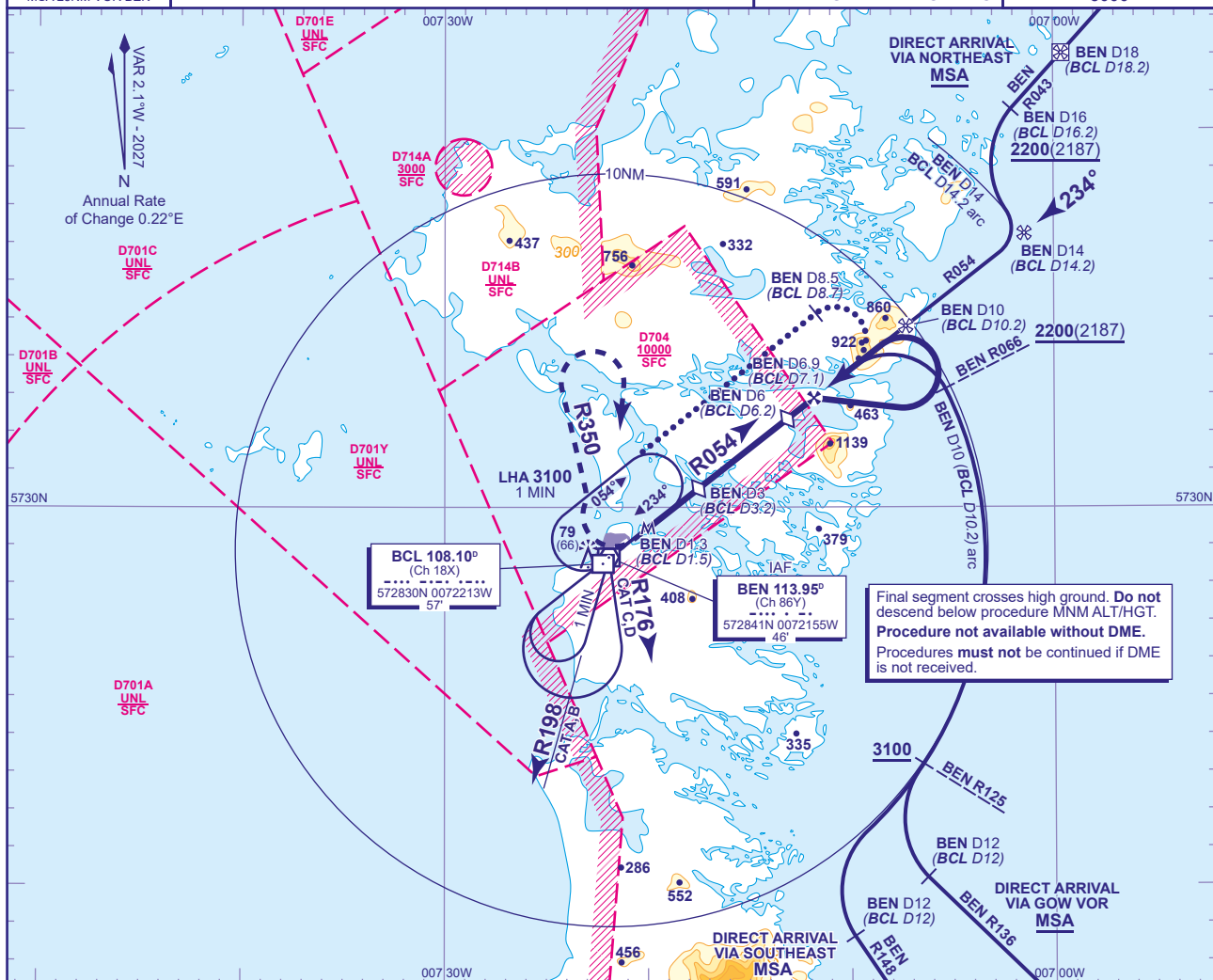


INSTRUMENT APPROACH CHART - ICAO

BENBECULA
VOR/DME Z
RWY 24
(ACFT CAT A,B,C,D)

APP	119.205	BENBECULA APPROACH	AD ELEVATION	19
TWR	119.205	BENBECULA TOWER	THR ELEVATION	13
AFIS	119.205	BENBECULA INFORMATION	OBSTACLE ELEVATION	79 AMSL (66) (ABOVE THR)
ATIS	129.885	BENBECULA INFORMATION	BEARINGS ARE MAGNETIC	

TRANSITION ALTITUDE
3000

RECOMMENDED PROFILE Gradient 5.7%, 344FT/NM

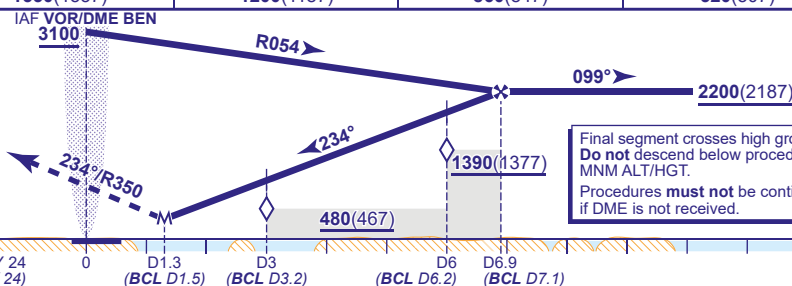
DME BEN (BCL)	6 (6.2) (SDF)	5 (5.2)	4 (4.2)	3 (3.2) (SDF)	2 (2.2)
ALT(HGT)	1890(1877)	1550(1537)	1200(1187)	860(847)	520(507)

MAPt BEN DME 1.3 (BCL D1.5)

Danger Areas Active:

Climb straight ahead to 520, then climbing turn right to intercept and track VOR BEN R350. After passing 1700, climbing turn right to return to VOR BEN at 3100.

Note: No turns permitted before MAPt.



Final segment crosses high ground. Do not descend below procedure MNM ALT/HGT. Procedures must not be continued if DME is not received.

DME BEN reads 0.7NM at THR RWY 24
(DME BCL reads 0.9NM at THR RWY 24)

Aircraft Category	A	B	C	D	Rate of descent	G/S KT	160	140	120	100	80
OCA (OCH)	Procedure	340(327)	340(327)	340(327)	340(327)	FT/MIN	920	800	690	570	460
VM(C)OCA (OCH AAL)	Total Area	470(451)	710(691)	810(791)	810(791)						

ALTERNATIVE PROCEDURE EXTENDED HOLDING PATTERN Overhead VOR DME BEN in holding pattern, turn right and descend on extended outbound leg to 2200. At BEN DME 8.5 (BCL D8.7) turn right to intercept FAT. When established, continue as for main procedure.

- NOTES
- FAT is offset 3.7° from RWY 24 C/L.
 - Procedures interact with Danger Areas EGD701A, 701B, 701C, 701Y and EGD704. Procedures available subject to ATC permission.
 - To commence procedure from hold, overhead VOR DME BEN, fly baseturn manoeuvre on CAT A,B R198, CAT C,D R176 for 1 MIN then turn right to return to the facility on 054° not below 3100.

CHANGE (2/26): DME BCL ELEVATION. NOTE 3 REMOVED.